



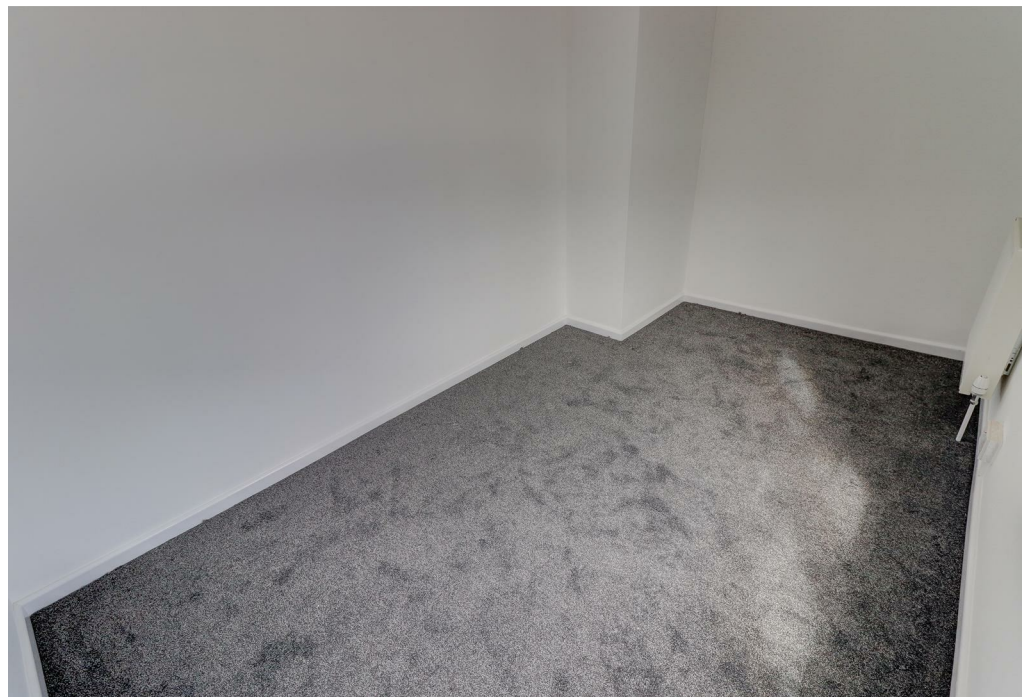
Bede Street, Leicester, LE3 5LD

Property Description

AVAILABLE 26TH JUNE

DEPOSIT ALTERNATIVE AVAILABLE Recently refurbished throughout, this spacious three-bedroom house on Bede Street, LE3 offers a brand new modern kitchen with sleek grey units, electric hob and oven, and an integrated extractor fan—please note white goods are not included. The property boasts fresh neutral décor, new flooring, and a bright, airy interior across all rooms. Located in a convenient area close to local shops, transport links, and amenities, this well-presented home is ideal for those seeking clean, contemporary living in a central location. Council Tax Band A.







Key Features

- Available 26th June
- West End, Leicester
- Terraced House
- 3 Bedrooms
- Unfurnished
- Small Garden
- On Road Parking Available
- Council Tax Band A
- Energy Rating D

£1,200 PCM